



# Smart PMO

Products & Services at the cutting edge of AI innovation

[info@smartpmo.io](mailto:info@smartpmo.io)



## EXECUTIVE TEAM



Stephen Lusty  
Project Manager  
Ex Google, Flextronics



Dr. Housseem Jerbi  
Chief Data Science  
PhD AI, ex Facebook, Insight  
Centre for Data Analytics



Dr. Aymen Ben Azouz  
Solutions Manager  
PhD IoT, Ex Oracle, Insight  
Centre for Data Analytics



Eugene Mac Mahon  
Sector Manager, Construction  
Multinational Projects



Dr. Ahmed Khamassi  
Tech & Data Advisor  
Equinor, JP Morgan, Google

## ACCOLADES

Supported by



AI & Data supplier



Partners



Innovation Award



# WHAT WE DO

- We solve complex industrial problems across multiple industries using **AI and data science** and state-of-the art **business processes**
- We build advanced AI solutions to **de-risk and optimise complex processes**

## AI for Project Management

- Proprietary AI algorithms
- Schedule, Cost, Resources, Safety, Contractors, Suppliers
- Maximise productivity
- Risk intelligence
- Optimise supply chain



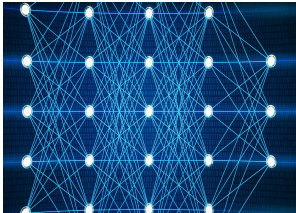
## Custom AI Development

- Act as AI partner for government departments and companies
- Build a secured Data infrastructure
- Build AI products to increase revenue, efficiency, productivity
- Value Assurance, Change Management

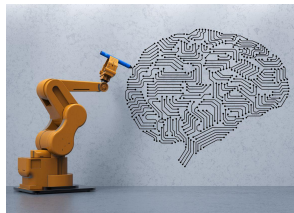
# AI TECHNOLOGIES



Machine learning



Deep learning



Reinforcement learning



Natural Language Processing



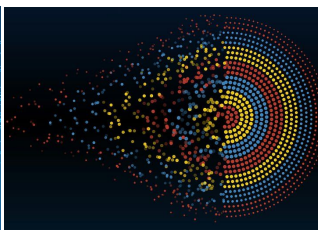
Recommender Systems



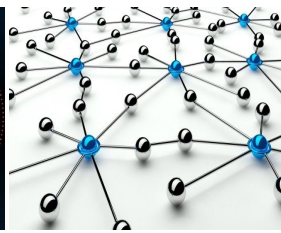
Cloud & Big Data



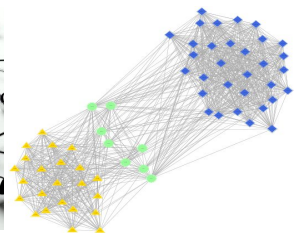
Data Management



Data Visualisation



IoT



Data mining

# OUR AI & DATA SERVICES - PROJECT THEMES

- Smart Cities
- GovTech
- Construction
- Energy
- Manufacturing
- FinTech
- Retail
- Health & Wellbeing
- AdTech

# OUR AI & DATA SERVICES - SELECTED CASE-STUDIES

## Smart City

AI system that predicts accident risks, understand reasons, identify high-risk accident blackspots

AI that uses IoT sensors data to measure traffic level and road quality and optimise road maintenance planning.

## Manufacturing

Predictive maintenance system for a global lifts and elevator manufacturer.

AI system that uses conditions data to optimise material procurement and assembly works planning.

## Construction

Intelligent cost benchmarking during projects early stage.

Project Risk & outcome prediction from project planning to closure.

Resource management and productivity optimisation.

## Retail

Demand forecasting & AI-based procurement optimisation.

Product recommender system for supplement and pharmaceutical online platform.

## FinTech

Investment lead sourcing for a private equity.

Investment recommender system for cross-border businesses.

## Real Estates & Housing

Housing intelligent planning tool that uses AI to offer builders and investors predictions of property demand and price.

## GovTech

AI system that streamlines citizen communications for a government department.

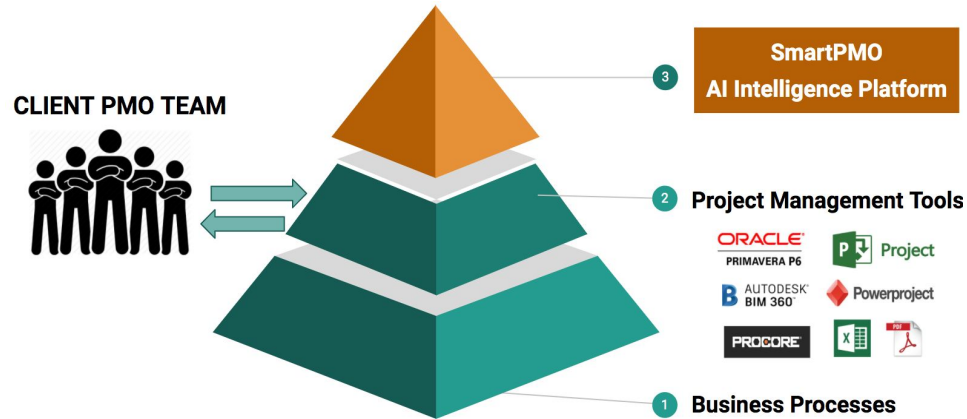
AI system that helps measure and optimise Government campaigns.

## Health & Healthy ageing

AI system that uses IoT data to support elder well-being.

AI recommender system that uses images data to provide support to people with dementia.

# OUR PRODUCT - CAPITAL PROJECT INTELLIGENCE PLATFORM



## What?

- **Automated & Scalable AI platform**
- Analyse & learn from data, then provide predictive insights & risk intelligence to optimise processes, planning and control

## Industries

- Construction & Engineering
- Pharmaceuticals
- Energy
- Housing

## Themes

- Cost
- Materials & resources
- Labor, safety
- Environment, waste

## Objectives

- Process optimisation
- Reduce waste
- Maximise productivity
- Net-zero, carbon reduction

# OUR PRODUCT - CASE-STUDY

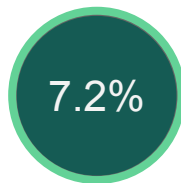
- **Client: Transport Department, Middle East**
- Projects type: Roads, bridges, tunnels
- £12b portfolio
- Challenges: Avg 56% delays, 41% cost overrun
- Data scattered (schedule & cost), poor quality



## SmartPMO Solution



Reduction in project delays



Cost saving

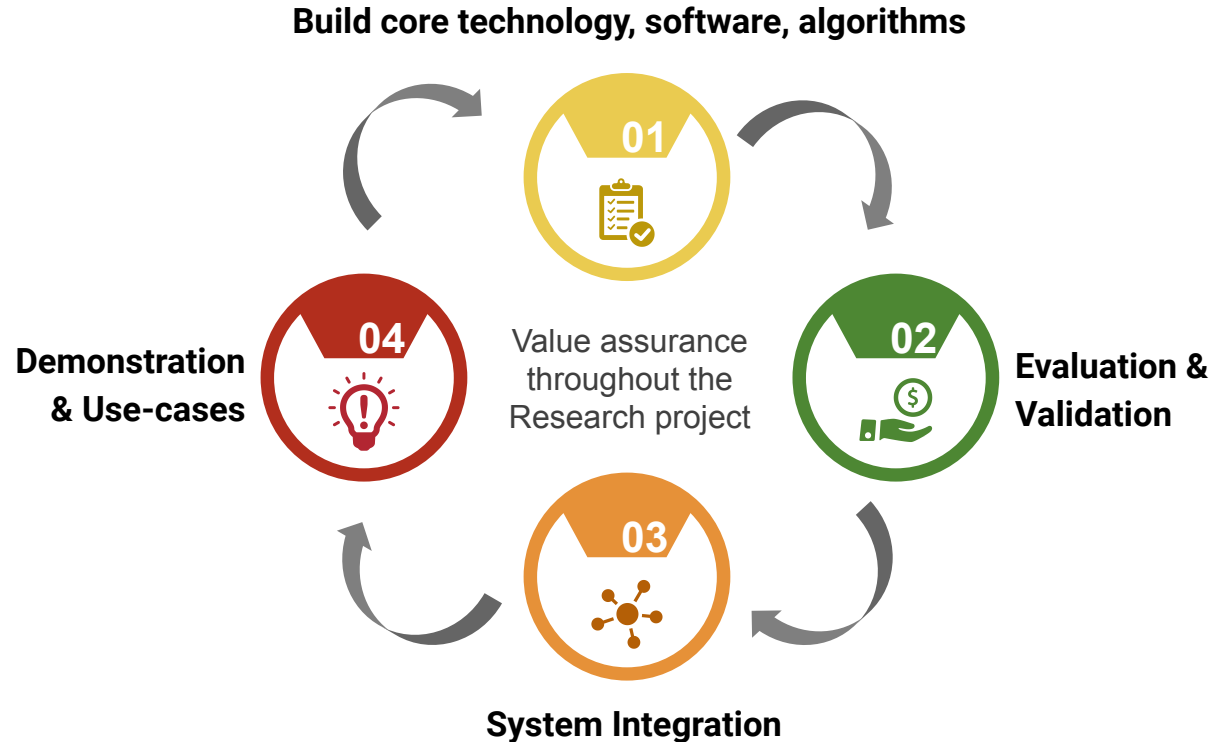


Reduction in process time



# OUR CONTRIBUTION TO HORIZON EUROPE CONSORTIUM

- We have strong experience record in delivering innovation projects across the R&D cycle.
- 3 strategic research & academic partnerships.
- PhDs & engineers with industry and research experience at Facebook, Google, Insight Centre for Data analytics, University College Dublin, etc.



# MAIN TOPICS OF INTEREST - CLUSTER 4

## ***DESTINATION – CLIMATE NEUTRAL, CIRCULAR AND DIGITISED PRODUCTION***

HORIZON-CL4-2022-TWIN-TRANSITION-01-06	ICT Innovation for Manufacturing Sustainability in SMEs (I4MS2)	IA
HORIZON-CL4-2022-TWIN-TRANSITION-01-07	Digital tools to support the engineering of a Circular Economy	RIA
HORIZON-CL4-2022-TWIN-TRANSITION-01-09	Demonstrate the use of Digital Logbook for buildings	IA
HORIZON-CL4-2022-TWIN-TRANSITION-01-10	Circular flows for solid waste in urban environment	IA

## ***DESTINATION – INCREASED AUTONOMY IN KEY STRATEGIC VALUE CHAINS FOR RESILIENT INDUSTRY***

HORIZON-CL4-2022-RESILIENCE-01-02	Monitoring and supervising system for exploration and future exploitation activities in the deep sea	RIA
HORIZON-CL4-2022-RESILIENCE-01-06	Sustainable and innovative mine of the future	IA
HORIZON-CL4-2022-RESILIENCE-01-19	Advanced materials modelling and characterisation	RIA
HORIZON-CL4-2022-RESILIENCE-01-25	Optimised Industrial Systems and Lines through digitalisation	IA

# MAIN TOPICS OF INTEREST - CLUSTER 4

## ***DESTINATION – WORLD LEADING DATA AND COMPUTING TECHNOLOGIES***

HORIZON-CL4-2022-DATA-01-01	Methods for exploiting data and knowledge for extremely precise outcomes (analysis, prediction, decision support), reducing complexity and presenting insights in understandable way	RIA
HORIZON-CL4-2022-DATA-01-04	Technologies and solutions for data trading, monetizing, exchange and interoperability	IA
HORIZON-CL4-2022-DATA-01-05	Extreme data mining, aggregation and analytics technologies and solutions	RIA

## ***DESTINATION – DIGITAL AND EMERGING TECHNOLOGIES FOR COMPETITIVENESS AND FIT FOR THE GREEN DEAL***

HORIZON-CL4-2022-DIGITAL-EMERGING-01-05	AI, Data and Robotics for Industry optimisation (including production and services)	IA
---	---	----

## ***DESTINATION – A HUMAN-CENTRED AND ETHICAL DEVELOPMENT OF DIGITAL AND INDUSTRIAL TECHNOLOGIES***

HORIZON-CL4-2022-HUMAN-01-01	AI for human empowerment (AI, Data and Robotics Partnership)	RIA
------------------------------	--	-----



# Get in touch

[housseem@smartpmo.io](mailto:housseem@smartpmo.io)

Supported by



AI & Data supplier



Partners



Innovation Award

